

RANA LED Surface 1500

RANA LED S 1500 HO 4K LOUV+PRI DALI W GEN2

0051532



Product features

- Surface or Suspended LED Linear luminaire with Louvre + Prismatic Optic, Direct Light Distribution, Luminaire Dimensions: 1440x187x47mm, Sylvania White body colour, IP20, IK07, Light Engine Dimensions: 1410x165mm, DALI Dimmable (Switch-DIM/Push-DIM enabled), Low LED flicker (+/-5%), Neutral White (4000K) LED Colour Temperature, 7500lm, 62W, 121lm/W efficacy, CRI>80, 3 SDCM (3-step MacAdam ellipse) LED Colour Consistency, UGR<19, Luminance at 65° < 3000 cd/m2, Lumen Maintenance: L90B10 at 50,000 hours, Quick electrical connection with push-connectors in the luminaire, Glow Wire Test 850°C.



PRODUCT OVERVIEW

Product name	RANA LED S 1500 HO 4K LOUV+PRI DALI W GEN2
Technology	LED
Cap/Base	N/A
Housing	Steel
Mount	Ceiling surface mounting, Suspended
General application	Office, Hospitality, Retail, Education
ETIM Class	EC002892
E-number FI	4273719
Warranty	5 years
Fixture luminous flux (lm)	7500
Luminous flux (lm)	7500
Luminaire efficacy (lm/W)	113
Colour temperature (K)	4000
Light colour	Neutral White
CRI (Ra)	80
Colour Variation Initial (SDCM)	SDCM3
Glare control	< 19
Photobiological Risk Group	RG0
Total power consumption (W)	62
Electrical protection	Class I
Control gear type	Electronic ballast
Dimmable	Yes
Minimum dimming level (%)	99
Housing colour	White
IP rating	IP20
IK rating	IK07
Product EAN number	5410288515328

DATA TABLE

General data

Product name	RANA LED S 1500 HO 4K LOUV+PRI DALI W GEN2
--------------	--

RANA LED Surface 1500

RANA LED S 1500 HO 4K LOUV+PRI DALI W GEN2

0051532

Technology	LED
Cap/Base	N/A
Housing	Steel
Mount	Ceiling surface mounting, Suspended
General application	Office, Hospitality, Retail, Education
Performance ambient temperature Tq (°C)	25
ETIM Class	EC002892
E-number FI	4273719
Warranty	5 years

Optical data

Fixture luminous flux (lm)	7500
Luminous flux (lm)	7500
Luminaire efficacy (lm/W)	113
Colour temperature (K)	4000
Light colour	Neutral White
CRI (Ra)	80
Colour Variation Initial (SDCM)	SDCM3
Glare control	< 19
Photobiological Risk Group	RG0

Electrical data

Total power consumption (W)	62
Mains voltage (V)	220-240V~
Lamp power factor	0.99
Electrical protection	Class I
Control gear required	No
Control gear type	Electronic ballast
Dimmable	Yes
Minimum dimming level (%)	99
Drive current (mA)	525
Inrush Current (A)	29
Inrush Duration (µs)	155
Glow Wire Test (°C)	850
Energy Efficiency Class (A->G) of contained light source	C, C(more than 1 Light Source)
Nominal Frequency (Hz)	50/60Hz
Max. Luminaires per 10A C Breaker	21
Max. Luminaires per 13A C Breaker	28
Max. Luminaires per 16A C Breaker	35
Max. Luminaires per 20A C Breaker	45
Max. Luminaires per 10A B Breaker	13
Max. Luminaires per 13A B Breaker	17
Max. Luminaires per 16A B Breaker	21
Max. Luminaires per 20A B Breaker	27

Lifetime data

Lifespan L70 B50	50000
Lifespan L70 B10	50000

RANA LED Surface 1500

RANA LED S 1500 HO 4K LOUV+PRI DALI W GEN2

0051532

Lifespan L80 B50	50000
Lifespan L80 B10	50000
Lifespan L90 B50	50000
Lifespan L90 B10	50000

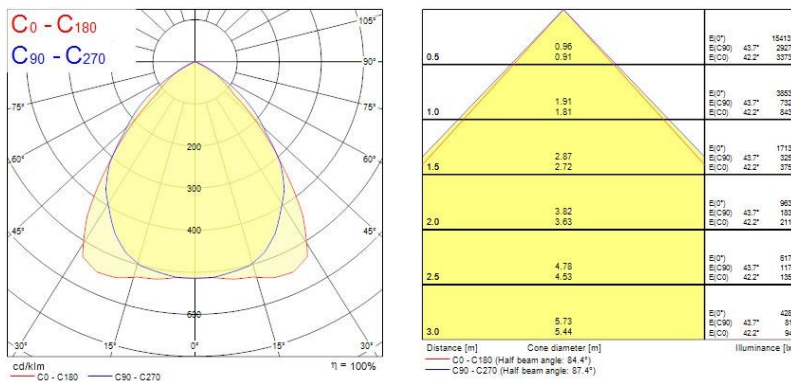
Physical data

Housing colour	White
IP rating	IP20
IK rating	IK07
Diffuser finish	Prismatic
Diffuser material	PC Polycarbonate
Nominal Product Length (mm)	1460
Nominal Product Width (mm)	187
Nominal Product Height (mm)	47
Weight (kg)	4.0

Packaging

Single packaging type	Carton
Product EAN number	5410288515328
Packaging single length / height (cm)	153.5
Packaging single width (cm)	6.5
Packaging single depth (cm)	21.0
DUN14 (outer)	05410288515328
Units per outer package	1
Packaging outer length / height (cm)	153.5
Packaging outer width (cm)	6.5
Packaging outer depth (cm)	21.0

PHOTOMETRY



TECHNICAL DRAWINGS

